

# SCREEN

# Truepress Jet 650 UV

---

UV inkjet printing system for industrial use

---



 Creating a Future in Print

The Truepress Jet650 is an industrial UV inkjet printing system that combines Screen's famed image processing and printing technology with the latest inkjet printing technology. This remarkable new system offers both high output quality and high productivity, thanks to its use of a multiple printhead array, the only example of this technology in its class. The Truepress Jet650 supports a maximum resolution of 2,400 x 2,400 dpi and can print at speeds up to 1,300 cm<sup>2</sup>/min (under Screen's recommended conditions). It can also handle media up to 50 mm thick, and can print directly onto a wide variety of media with its original UV inks. Providing all the advantages of UV inkjet printing, including superior ink adhesion with a variety of media, fast drying, and environmentally friendly operation, the Truepress Jet650 UV makes it easy to produce small lots of variable materials faster, and opens up a world of possibilities.



**Industrial materials**

Applications for the Truepress Jet650UV in the industrial materials field, in which precision, visual confirmation, and durability are so crucial, include the production of audiovisual and IT equipment, operation panels for industrial and other equipment, cellular phones and remote controls, gauges and meters, text on printed circuit boards, and more.



**Business forms and reports**

The Truepress Jet650UV can be used to create colorful designs and vivid reproductions of photographs, such as those seen in employee cards, security passes, membership cards, and parking passes.



**Packaging**

The Truepress Jet650UV is perfect for small-lot production of packaging for limited-run products and novelties, as well as for the creation of dummies before mass production. It can be used on film and flexible packaging materials, as well as paper and cardboard.



# Tried-and-true printing technology and inkjet technology combined. The possibilities are endless!

## World's best productivity

The Truepress Jet650UV's use of a linear motor drive enables a top speed of 1,300 cm<sup>2</sup>/min (under Screen's recommended conditions). The combination of the linear motor drive, the unique multiple printhead array (up to 32 printheads can be installed), and the high-powered UV light source results in the highest productivity in the world for an industrial printing system.

## Dependable, consistent output

The Truepress Jet650UV features a variety of printhead quality maintenance functions, including a nozzle misfire check function and non-contact wiping, which ensure optimal printing conditions are maintained at all times. The Truepress Jet650UV also has a function that prevents the heat of the UV light source from distorting resin-type media, which helps ensure consistent production and high reliability. Screen has spent years perfecting its printing technology, which is combined with inkjet technology in this remarkable output system. The applications and possibilities for the Truepress Jet650UV are endless.

## High-precision, high-quality imaging

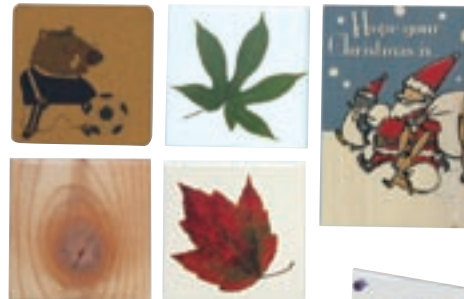
With a maximum output resolution of 2,400 x 2,400 dpi and grayscale piezo drop on demand (DOD) inkjet heads, the Truepress Jet650 UV can create high-precision output of a quality that rivals that of offset printing. It also features newly developed, original screening technology that makes it possible to output vibrant, high-precision gradations at a level that has been almost impossible to achieve in the past.

## High-precision output onto a variety of media

The Truepress Jet650UV features automatic alignment and  $\theta$  adjustment (microscopic angle adjustment) of the printing table. This helps ensure superior printing precision when printing on both sides of transparent media or using overprinting, as well as during printing onto media up to 50 mm thick. What's more, the Truepress Jet650UV uses Screen's original UV cured inks, which are compatible with a variety of media, and can also use white inks (option) to print in full, vibrant color on transparent media.

### Sign/Display printing

The Truepress Jet650UV is also an excellent system for the sign/display field, in which there are so many different types of design, materials, and post-processing. The unique UV inks that Screen has developed are highly light- and weather-resistant, so they resist fading.



### Souvenirs and interior products

The Truepress Jet650UV is perfect for the production of souvenirs of a particular region, original products for household interiors, and other small-production, highly unique products.





### $\theta$ adjustment (microscopic angle adjustment) for the printing media

Minute offsets and distortions in the media are automatically corrected through  $\theta$  adjustment (microscopic angle adjustment) of the printing table, to ensure high precision.

### Auto alignment

The Truepress Jet650UV features a dedicated CCD camera that detects registration marks on printing media and automatically adjusts the alignment to ensure consistent registration accuracy.

### Functions that support better printhead output quality

Nozzle clogs and soiling of the inkjet printheads have generally been viewed as major, but unavoidable, problems with inkjet printing mechanisms. The Truepress Jet650UV prevents these problems through a variety of head quality maintenance functions, including a nozzle misfire check function and non-contact wiping. These functions make it possible to maintain optimal printing conditions at all times.

## Truepress Jet650UV specifications

Name	Truepress Jet650UV
Type	Inkjet printing system
Output size	644 x 594 mm (25.3" x 23.3")
Media size	Maximum 650 x 600 mm (25.5" x 23.6")
Media thickness	Maximum media thickness 50 mm (1.96")
Media setup	Positioning using adjustable height pins, vacuum attachment
Output resolution	Maximum output resolution 2,400 dpi
Head	Gray scale head, color module type (up to 8 modules and 32 heads)
Inks	Original flexible UV inks (CMYK is standard, White ink is optional)
Printing speed	Maximum speed 1,300 cm <sup>2</sup> /minute (under Screen's operating conditions)
Ink tank capacity	1 Liter per module
RIP	Screen RIP
Dimensions	2,000 x 3,880 x 2,220 mm (78.8" x 152.8" x 87.4") (W x D x H) Note: Main unit only (does not include temperature control unit, ink tanks, or blower unit)
Weight	1,700 kg (3,740 lb) (main unit only)
Power source	Single phase 200/208/220~240V, 27A Three phase 200/208/220/240V 60Hz, 200/380/400/415V 50Hz 32A
Options	White ink option, etc.

## DAINIPPON SCREEN MFG. CO., LTD.

### HEAD OFFICE

Teranouchi-agaru 4-chome, Horikawa-dori, Kamigyō-ku, Kyoto, 602-8585 Japan/Phone +81-75-414-7610/Fax +81-75-414-7608

### SCREEN (USA)

5110 Tollview Dr., Rolling Meadows, IL 60008, USA/Phone 847-870-7400/Fax 847-870-0149 www.screenusa.com

### DAINIPPON SCREEN (DEUTSCHLAND) GmbH

Mündelheimer Weg 39, 40472 Düsseldorf, Germany/Phone 0211-472701/Fax 0211-4727199/Telex 858-4438 DSDD D

### DAINIPPON SCREEN (U.K.) LTD.

Michigan Drive, Tongwell, Milton Keynes, Buckinghamshire MK15 8HT, UK/Phone 01908-848500/Fax 01908-848501 www.screen.co.uk

### DAINIPPON SCREEN (NEDERLAND) BV

Bouwerij 46, 1185 XX Amstelveen, Holland/Phone 020-4567800/Fax 020-4567805 www.screen-europe.com

### SCREEN FRANCE

10 allée des Cascades, immeuble Niagara, Z.I. Paris Nord 2, 95940 Roissy C.D.G. Cedex, France/Phone +33 (0)1 48178600/Fax +33 (0)1 48178601

### DAINIPPON SCREEN SINGAPORE PTE. LTD.

29, Kaki Bukit View, Kaki Bukit Technopark II, Singapore 415963/Phone 67493833/Fax 67499010 www.screen-sp.com.sg

### DAINIPPON SCREEN (CHINA) LTD.

Room 2001 - 2003, 20/F Cable TV Tower 9 Hoi Shing Road Tsuen Wan, N.T. Hong Kong/Phone +852-2953-0038/Fax +852-2755-8683

Beijing office/Phone 010-6708-9271, 9272, 9273/Fax 010-6708-9395

Shanghai office/Phone 021-6466-4501/Fax 021-6466-4503

Guangzhou office/Phone 020-3891-1112/Fax 020-3891-1036

### DAINIPPON SCREEN (TAIWAN) CO., LTD.

#F No. 128-1, Ming Tsu West Rd., Taipei, Taiwan/Phone 02-25862711/Fax 02-25914367

### DAINIPPON SCREEN (KOREA) CO., LTD.

10th Yonsei Bongsae B/D 48-3, 1Ga, Bongsae-Dong, Joong-Gu, Seoul 100-161, Korea/Phone 02-7766-7866/Fax 02-7766-787

### DAINIPPON SCREEN (AUSTRALIA) PTY. LTD.

Suite 11, 2 Eden, Park Drive, Macquarie, NSW2133, Australia/Phone +61-2-9016-3400/Fax +61-2-9016-3425

Internet web site : www.screen.co.jp

www.screenusa.com

www.screen-europe.com

• This brochure was made using SPEKTA 2 screening.



We reserve the right to alter product design and specifications without prior notice.